

# Alaska Department of Fish and Game

Habitat Section  
Southeast Region



## 114-27-10300 Tributary 2

## ADDITION

**Water body name:**

**Quad:** Juneau A-4

**Upper Reach Latitude:** 58.087620 **Longitude:** -135.276942

**Lower Reach Latitude:** 58.087684 **Longitude:** -135.278895

**Survey date:** 6/23/2022

**Species & Lifestage:**

**Survey crew:** FC, RR

**Findings:** We surveyed this uncataloged stream using a backpack electrofisher and GPS. We captured juvenile coho salmon, Dolly Varden, and scuplin. The tributary stream has potential rearing coho habitat upstream, but flows through a few 1-to-2 ft tall log jams that may temporarily block juvenile fish passage (Table 1; Figures 1, 2).

**Recommendations:** Add this uncataloged stream to the anadromous waters catalog for rearing coho salmon (Figure 3).

**Nomination:** Pending

Table 1.—114-27-10300 tributary 2 survey data.

Waypoint	Latitude	Longitude	Notes	Stream Width ft	Stream Substrate	Habitat Features	Gradient %	Sample Effort	Sample Results
833	58.087719	-135.277358	Start of survey on tributary. Tidally-influenced muskeg area with sedge grasses. Advancing upstream.	2-4	Sand	Fine Organic	0-1	EF	No Fish
834	58.087619	-135.276969	Young-of-year CO capture.					EF	2 CO 2 SC
835	58.087573	-135.276770	Substrate change and increased gradient at tree-line. Small 8-12" tall log jam may cause temporary barrier to rearing juvenile fish. Resident fish capture upstream of log jam.	2-4	Small Gravel Sand	Log Jams	4-6	EF	1 DV
836	58.087264	-135.276362	Two 1-2' tall log jams within ~25' reach; presents likely temporary barrier to rearing juvenile fish. Resident fish capture only since last waypoint.	2-4	Sand Fine Organic		4-6	EF	3 DV
837	58.087169	-135.276211	Gradient increasing. Only resident fish capture upstream of tree-line. Looks like potential good habitat for rearing juvenile fish, so may be candidate for future investigation at higher flow or once log jams rot out. Not good spawning habitat. End of survey on tributary.	2-4	Sand Small Gravel	Log Jams	6-8	EF	3 DV



Figure 1.—Juvenile coho salmon captured at waypoint 834.



Figure 2.—Channel emerging from forest at waypoint 835.



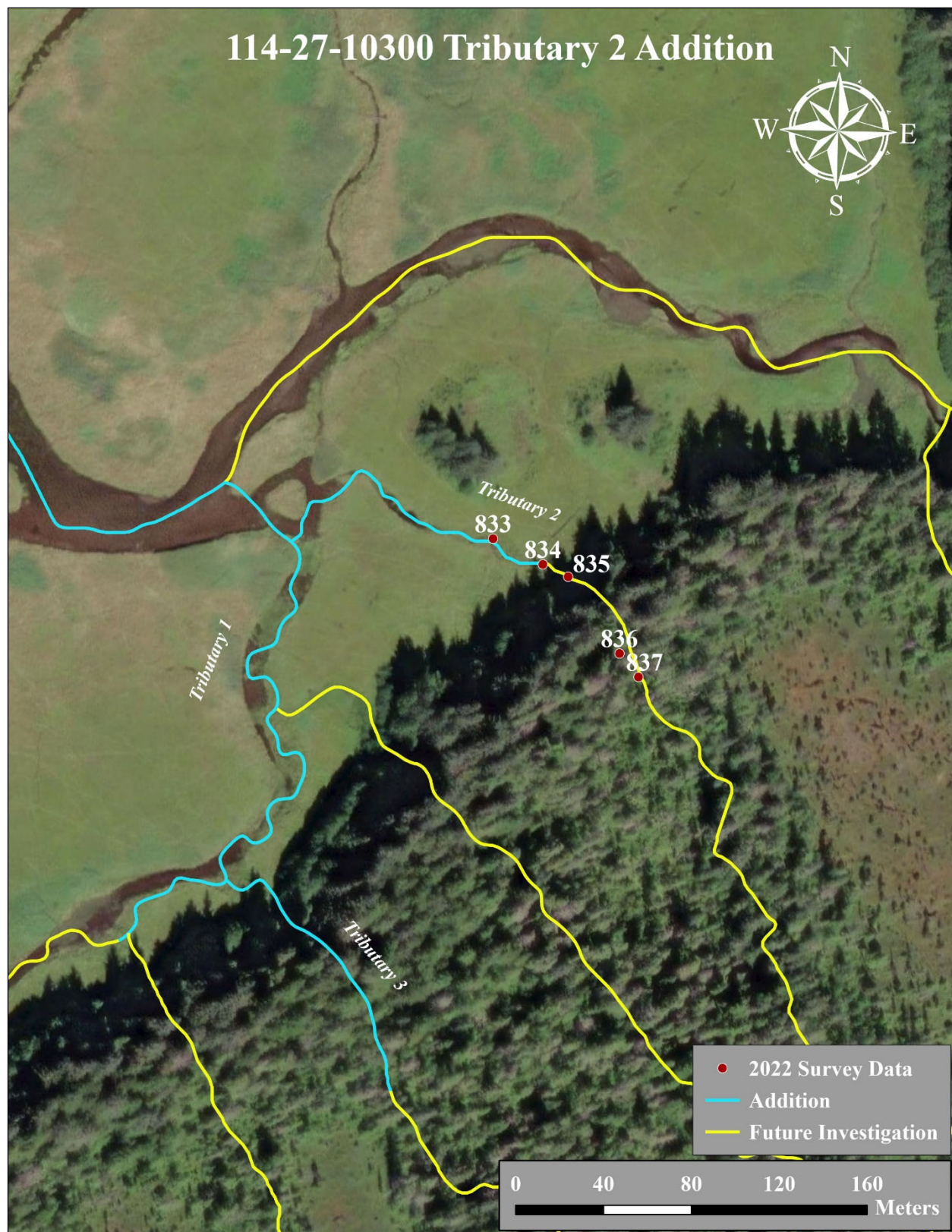


Figure 3.—114-27-10300 tributary 2 addition map.